

Impacts of GHG Assessment & Reporting

Presented by: Faizal Parish, Global Environment Centre,
Co-chair of ERWG



INCLUSIVITY AND
ACCOUNTABILITY



Presentation Outline:

- GHG requirements in P&C 2013
- GHG emissions of certified mills
- GHG Assessment Procedure for New Development
- Future Scenario
- Who are ERWG members

GHG requirement into RSPO Standards:

C5.6 existing
plantation

C7.8 low carbon
new plantation
development

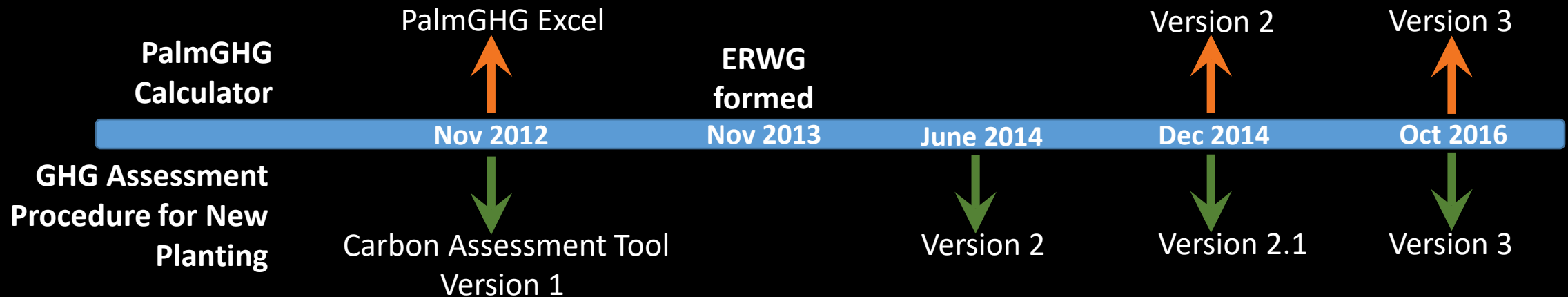


PalmGHG Calculator

GHG Assessment Procedure
for New Development

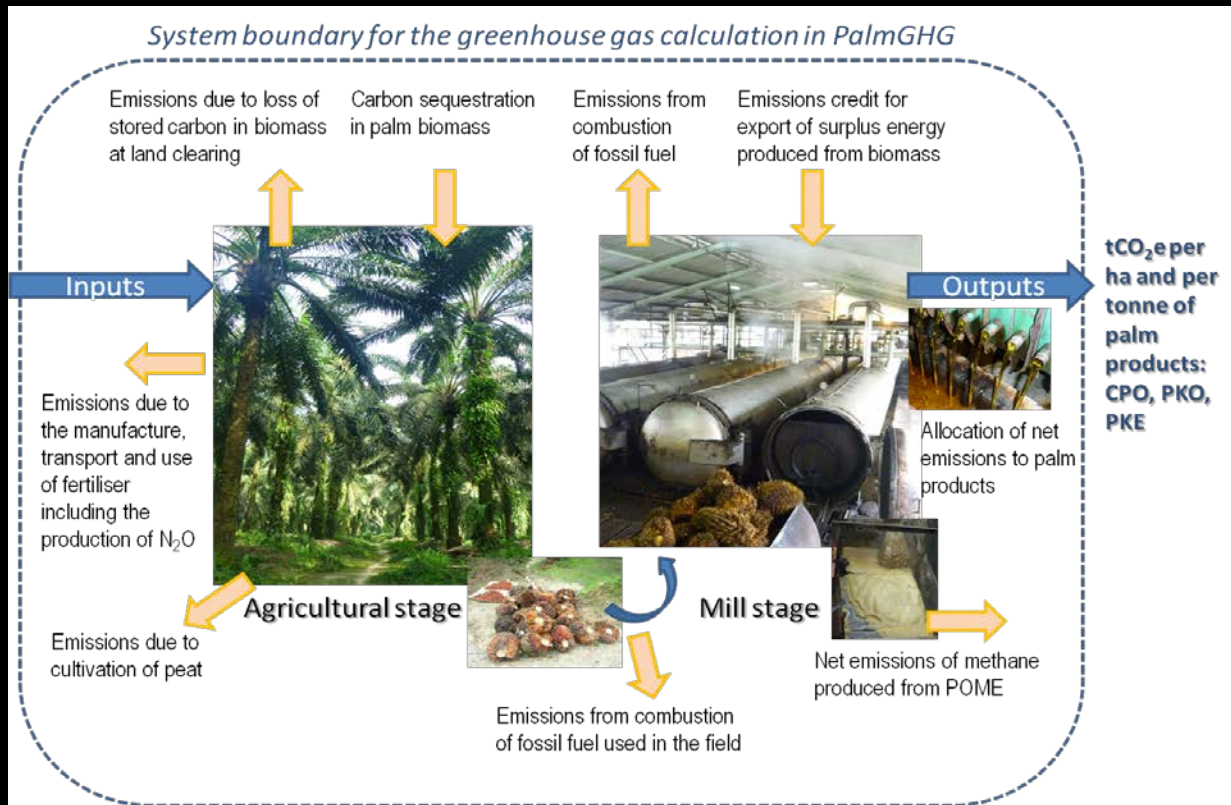


ERWG Progress:



- The PalmGHG Excel was initiated by GHG WG2 as a potential tool for monitoring GHG emission
- The Carbon Assessment Tool (version 1) was developed by RSPO Secretariat as the result of request from RSPO P&C (2007)
- The Emission Reduction Working Group (ERWG) was formed in November 2013

GHG emission from existing plantation (C.5.6):



Lifecycle Inventory

Criterion 5.6 of RSPO P&C 2013:

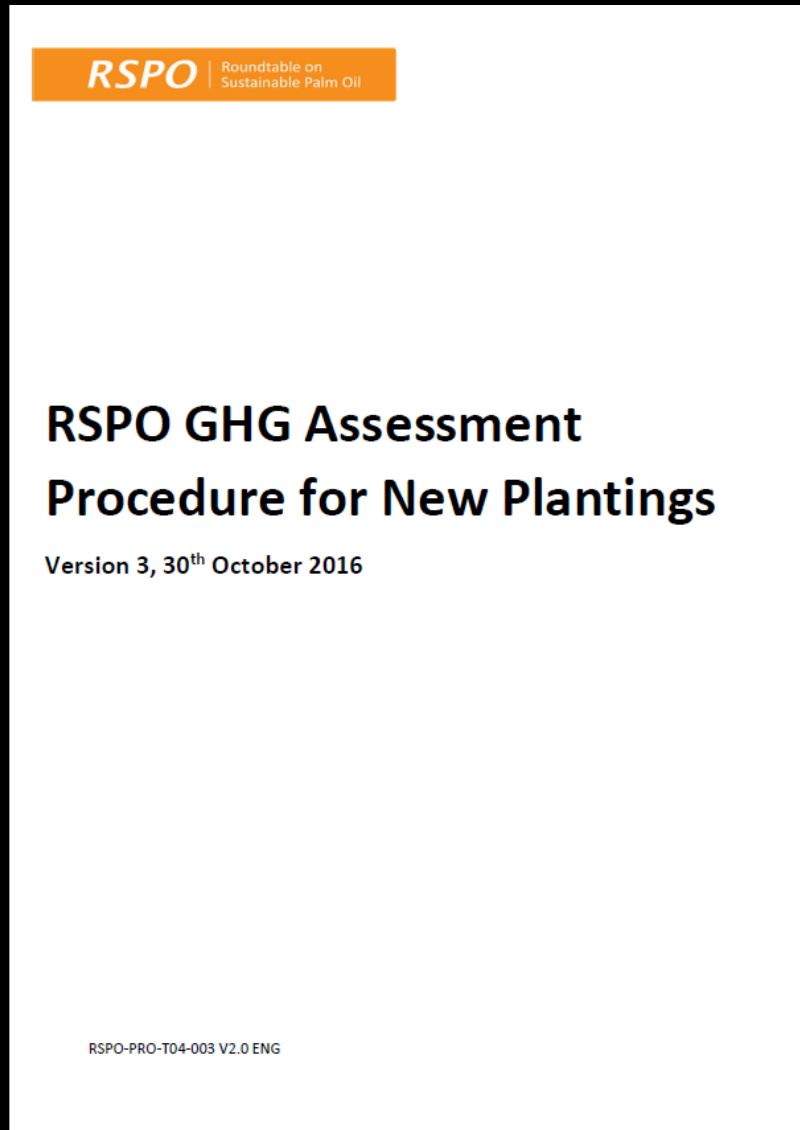
“Plans to reduce pollution and emissions, including greenhouse gases, are developed, implemented and monitored”

GHG emission from existing plantation (C.5.6):

	2015	2016	2017
Number of submissions	190	291	180
Mean GHG emissions (tCO ₂ e/Ha)	4.42 ± 15.63	6.20 ± 22.05	4.43 ± 19.14
	5.20 ± 19.62		
Mean GHG emissions (tCO ₂ e/tCPO)	2.13 ± 5.74	2.73 ± 5.99	2.07 ± 5.37
	2.38 ± 5.75		

**GHG value from submissions calculated using
RSPO PalmGHG Calculator**

GHG emissions of New Development (C.7.8):

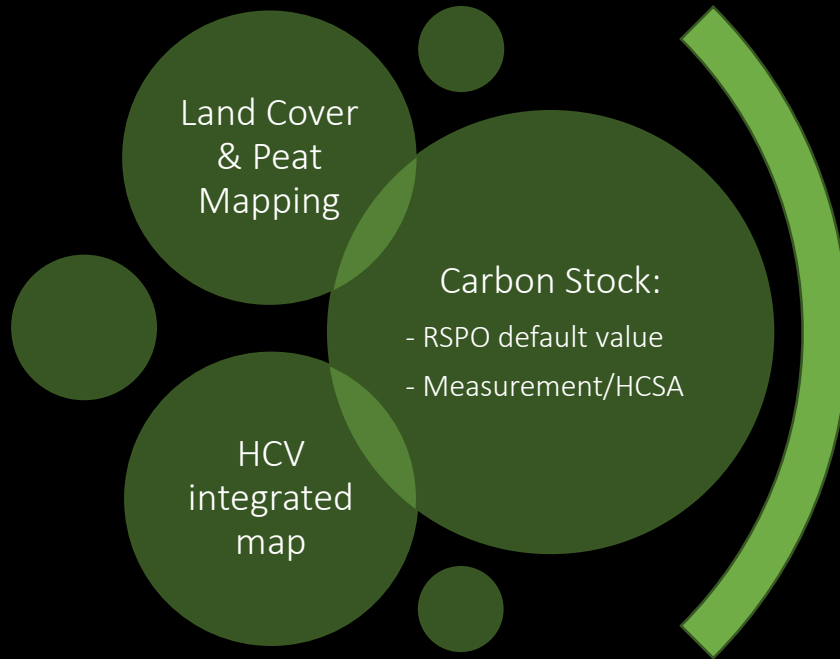


Criterion 7.8 of RSPO P&C
2013:

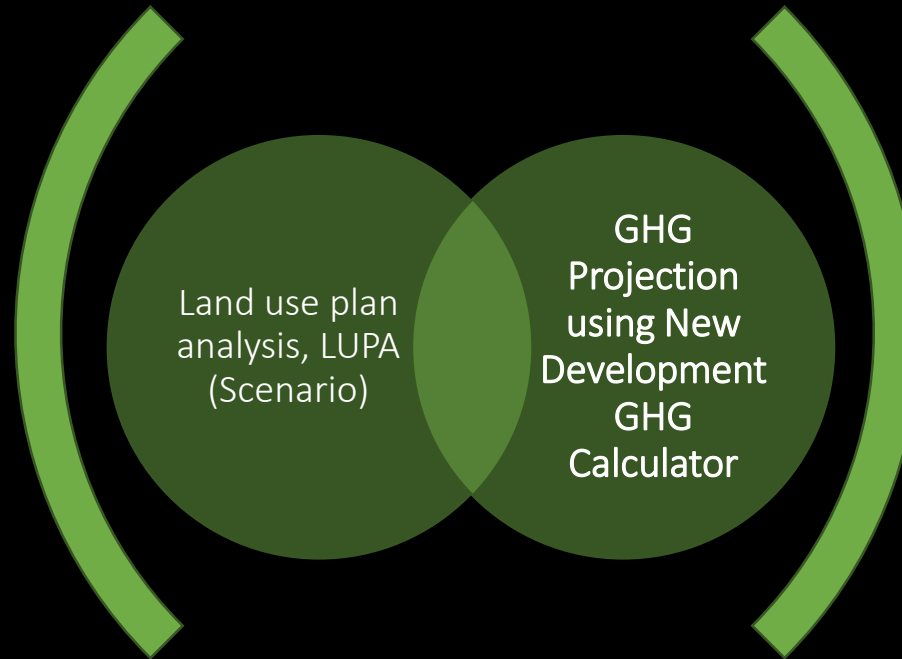
*“New plantation
development are designed
to minimize net
greenhouse gas emission”*

GHG Assessment Procedure for New Development:

Land Cover & Carbon Stock Assessment



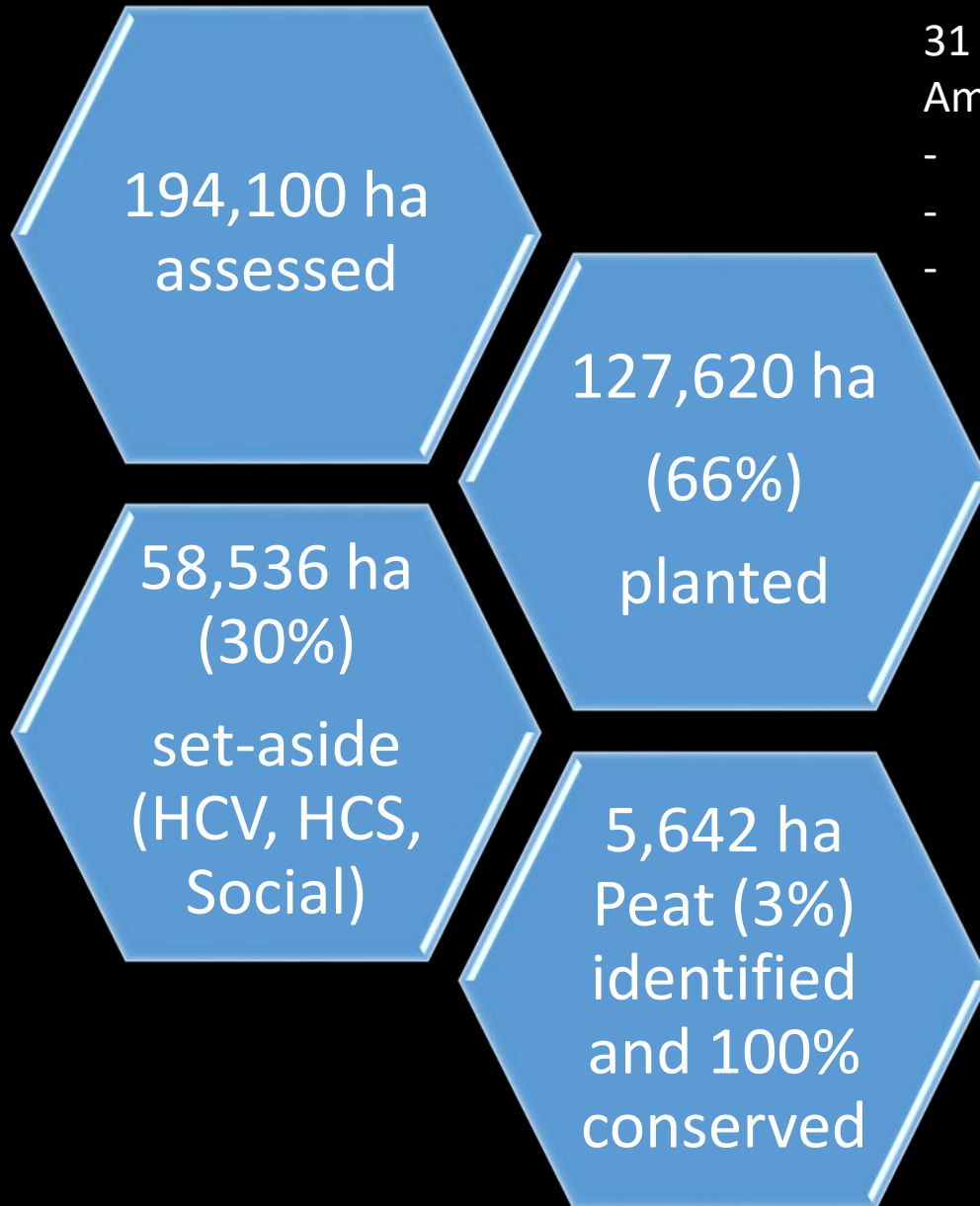
Land Use Planning & GHG Calculation Assessment



Final Outputs

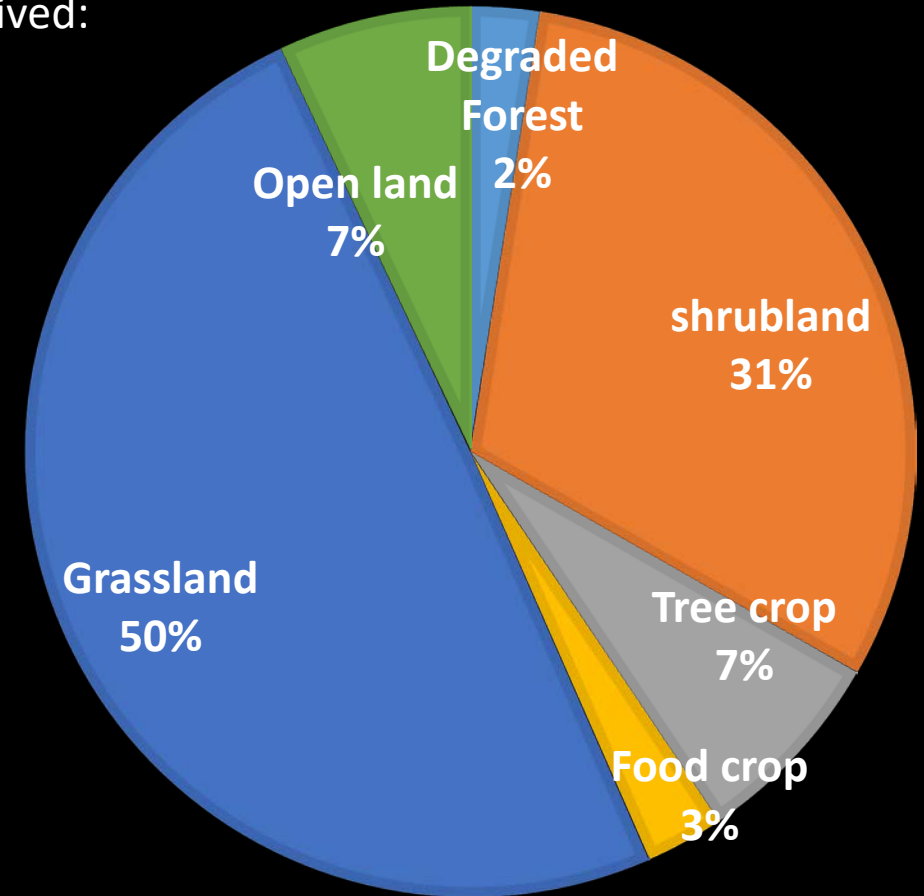
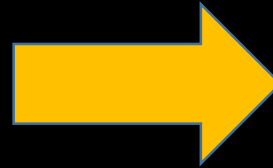


Analysis of 7.8 Submission from 2015 to 2017



31 submissions from Indonesia, Malaysia, PNG, South America, Africa received:

- 9 in 2015
- 18 in 2016
- 4 in 2017



Land Cover of Proposed New Planting Areas

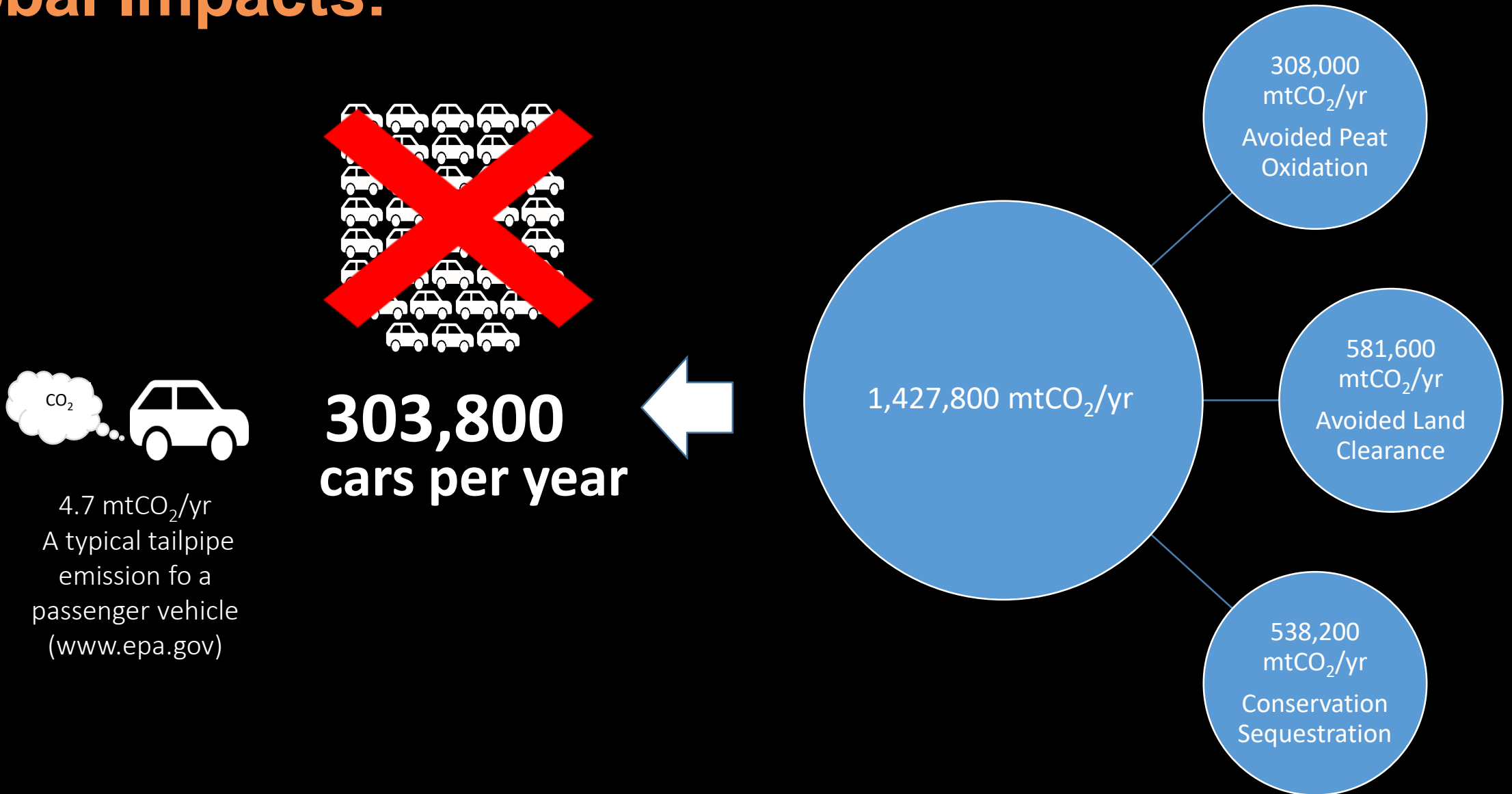
GHG emissions of New Development (C.7.8):

Projected emission calculated using New Development GHG Calculator

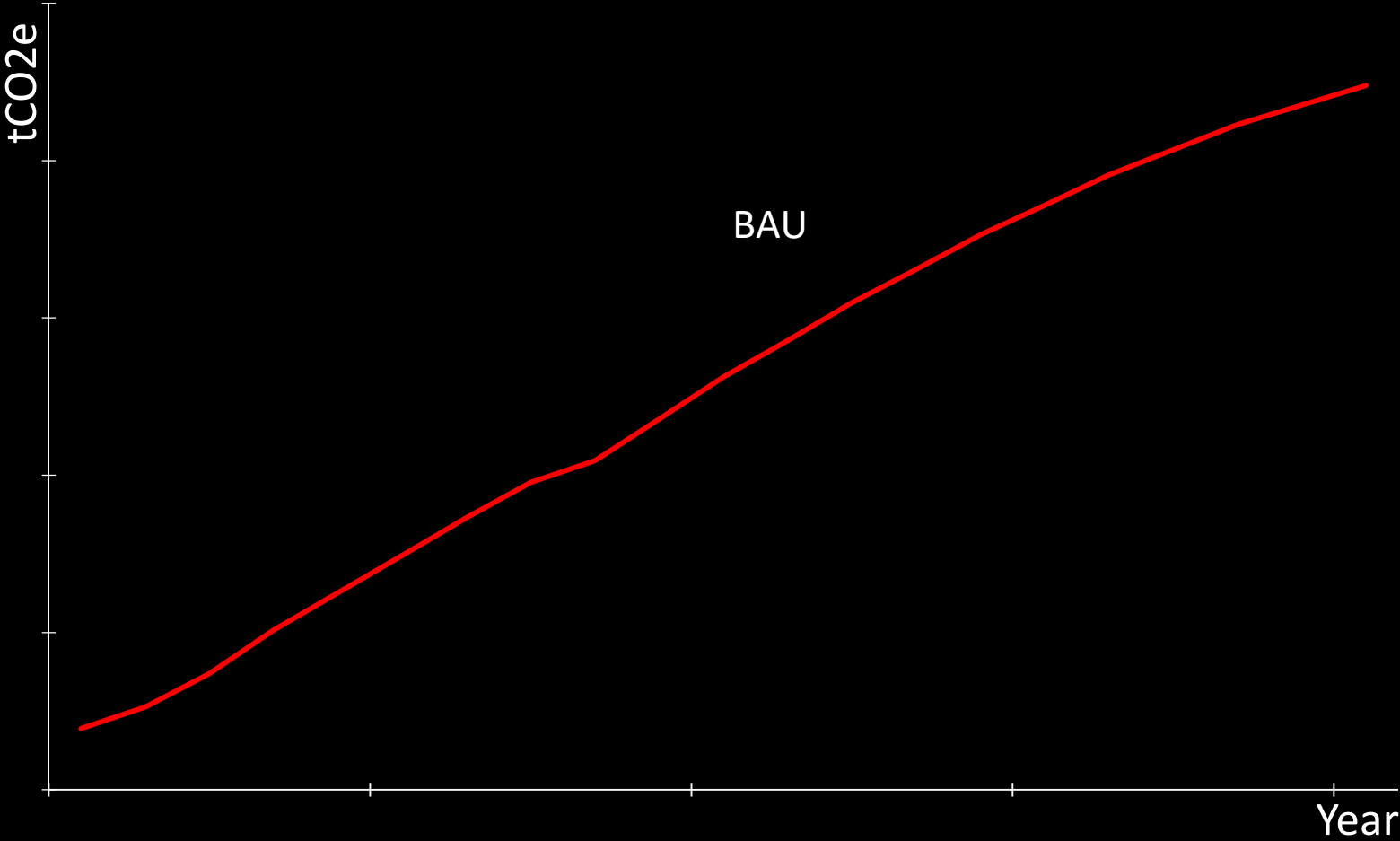
	Submissions from 2015 – 2017
Number of submissions	31
Projected net emissions (tCO ₂ e/tCPO)	-0.31 ¹
Projected net emissions (tCO ₂ e/ha)	-2.55 ¹

¹ Emission from mill operation without methane capture

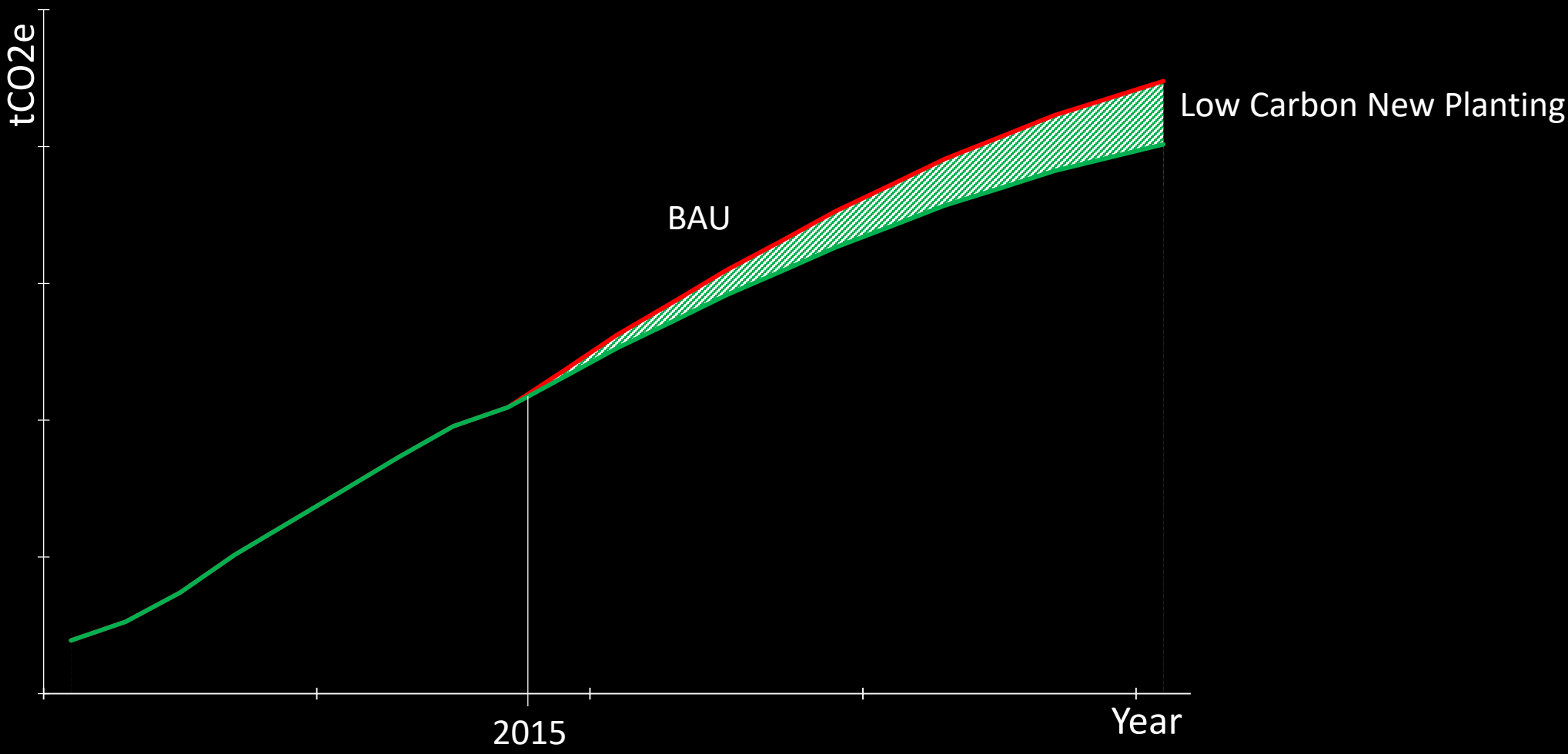
Global Impacts:



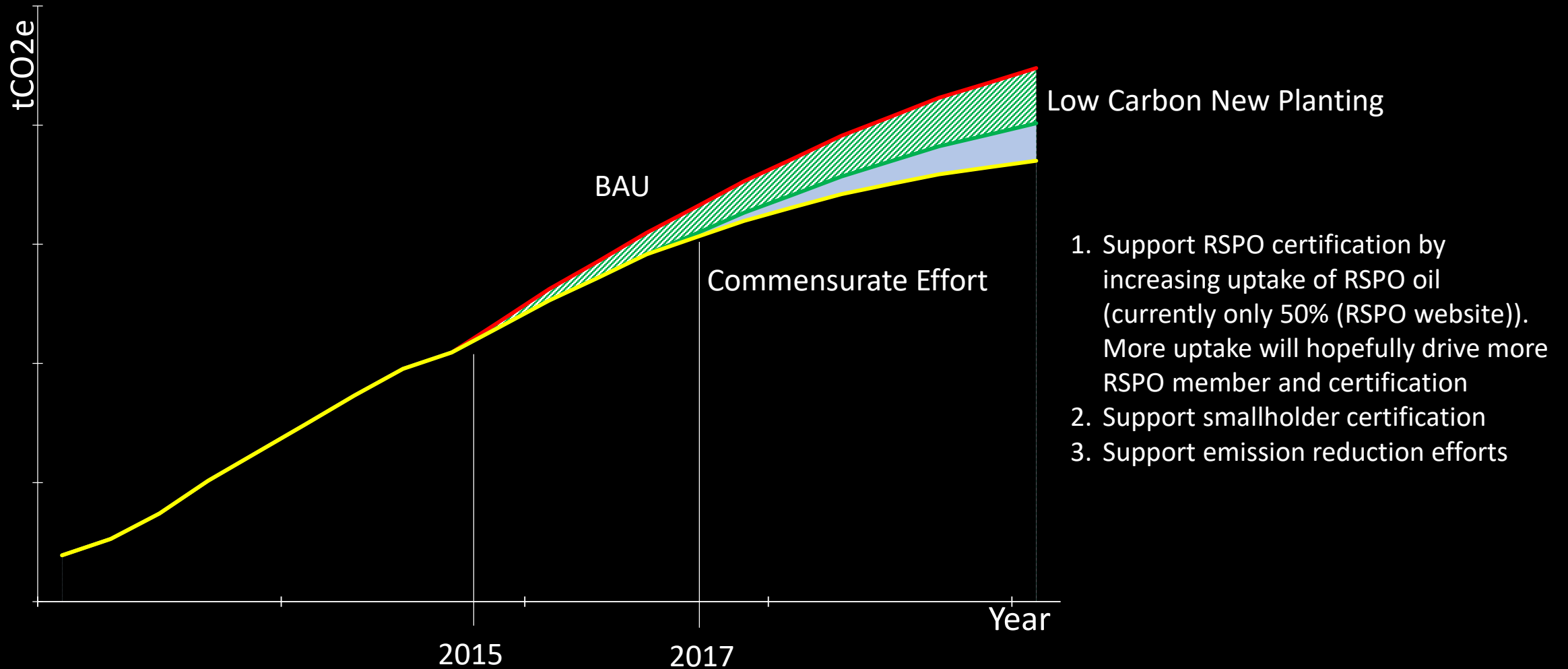
Future Scenario



Future Scenario



Future Scenario



ERWG Members





Thank You